

# TAMWORTH INDUSTRIAL CO-OPERATIVE SOCIETY

LIMITED.

Established November 24th, 1886.  
Registered March 15th, 1887.

Reg. Office: 5, Colehill, Tamworth, Staffordshire.

Register No. 2582, Staffs.  
Telephone: Tamworth 160.  
Telegrams: "KOHOP, TAMWORTH."

The 212th

## QUARTERLY REPORT

FOR THE

Quarter ended  
October 14th, 1939

BANKERS:

CO-OPERATIVE WHOLESALE SOCIETY LTD.  
MANCHESTER.



CENTRAL PREMISES.



## OFFICERS OF THE SOCIETY.

Chairman: Mr. L. HARPER.

Secretary and Manager: Mr. F. S. WHARTON, J.P., F.C.I.S., F.L.A.A.

Assistant Secretary: Mr. GEO. A. STOCK, M.I.S.F., A.C.S.A.

Auditor: Mr. A. STAFFORD, C.R.A., Public Auditor, Co-operative Wholesale Society Limited Audit Office, Corporation Street, Manchester, 4.

Arbitrators: COLONEL D'ARCY CHAYTOR, C.M.G., C.B.E., Rt. Hon. A. V. ALEXANDER, M.P., R. A. PALMER, Esq., C. C. POOLE, Esq., AND T. GWINNETT, Esq.

### GENERAL COMMITTEE AND THEIR ATTENDANCES, QUARTER ENDED OCTOBER 14th, 1939.

NAME.	Time Expires.	GENERAL.		SUB-COMMITTEES.				TOTAL.
		Meetings Called.	Meetings Attended.	Finance.	Trade.	Delivery.	Special.	
*Mr. JOHN DAVIS .....	December, 1939.....	13	13	13	...	...	1	27
*Mr. GEO. H. FARMER, (Holiday 2) .....	" " .....	13	8	8	2	2	...	20
*Mr. J. SMITH (Holiday 2) .....	" " .....	13	10	...	6	...	...	16
Mr. ALBERT E. HACKETT (Ill, 1) .....	June, 1940 .....	13	12	12	...	...	...	24
Mr. GEO. H. BROOKFIELD (Holiday 1) .....	" " .....	13	12	...	8	...	...	20
Mr. J. W. STAFFORD .....	" " .....	13	13	...	8	...	...	21
COUN. EDW. COLLINS (Working Out of Town 3).....	December, 1940.....	13	9	4	2	1	...	16
Mr. JOSEPH WRENCH .....	" " .....	13	13	...	...	4	1	18
Mr. C. W. DEAKIN (Holiday 1).....	" " .....	13	12	...	8	...	1	21
Mr. WILLIAM J. DAVIS (Holiday 1) .....	June, 1941 .....	13	12	...	...	4	...	16
Mr. C. T. HINDS .....	" " .....	13	12	...	...	4	...	16
Mr. L. HARPER (Holiday 2).....	" " .....	13	10	10	7	3	2	32

Those marked \* retire, but are eligible for re-election.

### NOMINATIONS FOR GENERAL COMMITTEE.

The following gentlemen were nominated at the last Quarterly Meeting:—

<i>Nominee.</i>	<i>Proposer.</i>	<i>Seconder.</i>
*Mr. J. DAVIS .....	Mr. A. A. Walker .....	Mr. W. Wilson and others.
*Mr. GEO. H. FARMER .....	Mr. R. Bates .....	Mr. J. T. Leedham.
Mr. GEO. H. SMITH .....	Miss V. N. Oliver .....	Mr. F. Asbury and others.
*Mr. J. SMITH .....	Mrs. E. M. Horne .....	Mr. J. Wildig and others.

\* Retiring Members who are eligible for re-election.

Voting will take place at the General Office, 5, Colehill, Tamworth, on Wednesday, December 6th, 1939, between the hours of 8 a.m. and 12 noon, and 2 p.m. and 7-30 p.m. Voting Papers will be supplied at these times, but the SHARE-HOLDER'S CARD MUST BE PRODUCED.

# THE QUARTERLY MEETING

WILL BE HELD

In the Co-operative Assembly Hall, Colehill, Tamworth,  
on Wednesday, December 6th, 1939.

---

MEMBERS WILL ONLY BE ADMITTED TO THE BUSINESS MEETINGS OF THE SOCIETY UPON  
PRODUCTION OF THEIR PASS CARDS AT THE DOOR, IN CONFORMITY WITH RULE 22.

---

Chair to be taken at **7-15 p.m.**, when the following and any other Business that may transpire  
will be brought forward:—

## AGENDA.

1. Confirmation of Minutes of the last Quarterly Meeting.
2. Report of Committee.
3. Recommendations of the Committee. That the Society  
subscribe—
  - (a) Bread to the value of £20 to Tamworth Hospital.
  - (b) £1. 1s. to the St. John Ambulance Brigade (Tamworth Division).
  - (c) £1. 1s. to the St. John Ambulance Brigade (Wilnecote Division).
  - (d) £1. 1s. to the Dordon Nursing Association.
  - (e) £1. 1s. to the Polesworth Nursing Association.
  - (f) £1. 1s. to the Amington and Shuttington Nursing Association.

4. Elections:—
  - (a) Arbitrators.
  - (b) Auditor.
  - (c) Scrutineer. Mr. A. E. Langtry retires, but is eligible for re-election.
5. Nominations of Three Members to serve on the Educational  
Committee. Alderman T. Leedham and Messrs. A. Walker  
and George H. Farmer are the retiring Members, and are  
eligible for re-election.
6. Report of Delegate:—  
C.W.S. Divisional Meeting at Birmingham.
7. Declaration of the Election of Three Members to the General  
Committee.

---

REMEMBER THE MILK BAR and CAFE for your Morning Coffee, Milk Drink, Bovril,  
Malted Milk, Sandwiches, Teas, &c., &c. :: Every attention given to your requirements.



# COMMITTEE'S REPORT.

## FELLOW-MEMBERS,

We herewith present to you our Report for the last Quarter, which ended on October 14th, 1939.

### MEMBERSHIP.—

Number at beginning of Quarter .....	10981
Admitted during the Quarter.....	205
	<b>11186</b>
Less Removals, &c.....	157
Leaving a net Membership of .....	<b>11029</b>

**SALES.**—The Sales for the Quarter were £93,834, whilst for last Quarter they were £90,752, and for the corresponding Quarter of last year they equalled £85,553.

The Sales of each department were as follows:—

Department.	This Quarter.	Corresponding Quarter last Year.	Department.	This Quarter.	Corresponding Quarter last Year.
	£	£		£	£
Grocery—Central .....	34365	30632	Greengrocery .....	583	719
Dordon Branch Grocery...	4041	3650	Bakery .....	12941	12736
Dordon Branch Drapery...	342	322	Boot Repairs .....	407	420
Butchery .....	5463	5811	Chemistry .....	2123	1947
Coal .....	1783	1203	Fishmongering .....	529	778
Boots and Shoes.....	2675	2175	Oil and Sundries Van ..	525	589
Drapery and Millinery ...	5036	3966	Dairy.....	7746	7063
Outfitting and Tailoring ..	3634	3052	Sweets and Tobacco ....	5043	4525
Furnishing and Crockery...	4560	3950	Milk Bar .....	549	332
Confectionery Shop.....	552	384			
Provender.....	1137	1299	Total.....	<b>£93834</b>	<b>£85553</b>

Owing to the outbreak of war and changes in retail prices, &c., it is somewhat difficult to obtain a true comparison of Sales between this Quarter and the corresponding Quarter of last year. As you already know, we, in common with many other traders, have experienced considerable difficulty in obtaining supplies of some essential commodities. Every effort has been made, and is still being made, to obtain supplies for our Members, and we regret any inconvenience that may have been caused, but the Minister of Food has given an assurance that when rationing becomes operative, every person will receive his allotted share of the goods so rationed and, as you already know, rationing for Butter and Bacon is coming into force, and we ask for your trade in these commodities, also for your registration for Sugar purchases.

**BREAD OUTPUT.**—The output of Bread for this Quarter was 71,736 stones. For the last Quarter it was 72,785 stones, and for the corresponding period of last year it equalled 73,911 stones.

**DIVIDEND.**—We have carefully considered this question, and recommend the payment of a Dividend of 1s. 6d. in the £. This will be paid out at the Central premises on Thursday, Friday, and Saturday, December 7th, 8th, and 9th, between the following times: 10 a.m. to 1 p.m. and 2 to 6 p.m. each day. You will appreciate that owing to the conditions prevailing and the dark nights of December, it is better for you to come for your Dividend in the daytime.

**DAIRY DEPARTMENT.**—The number of gallons of Milk despatched from the Dairy during the Quarter was 8,431 of tuberculin tested and 43,362 gallons of pasteurised. For the previous Quarter our Sales were 12,510 gallons of tuberculin tested and 39,767 gallons of pasteurised. For the corresponding period of last year they were 14,611 gallons of tuberculin tested and 31,650 gallons of loose Milk.

**MEMBERS' PURCHASES.**—The average weekly purchases per Member for this Quarter were 13s. 1½d. For the last Quarter it was 12s. 8d. per week, and for the corresponding period of last year 12s. 1½d.

**CHRISTMAS TRADE.**—We shall have a good range of presents suitable for Christmas gifts, and Toys, Games, &c., also Turkeys, Poultry, Geese, Beef, Mutton, &c., of the choicest. We trust to receive your patronage in this connection.

**GENERAL.**—We regret the passing of one of our employees in the person of Mr. Wm. Queenan (Tailoring Department), who died on October 18th. Although he had only worked for the Society for three years, we found him a competent member of our staff, and he was much respected by the Committee, officials, and employees of the Society. To his widow and relatives we express our deepest sympathy in their bereavement.

There are four nominees for three vacancies on the General Committee. Owing to the war conditions we have decided that voting for the General Committee shall conclude at 7-30 instead of 8 p.m. Will you please note this on December 6th?

We thank the Members of the Society and the staffs of the various departments for their support and co-operation, and although the present times are difficult and restrictive, we trust the conflict will soon be ended, and the Co-operative Movement will expand both locally and nationally in the future.

We trust you will have as happy a Christmas as is possible under the circumstances.

Yours faithfully, on behalf of the General Committee,

L. HARPER, Chairman.

FREDERICK S. WHARTON, Secretary.

## PLEASE NOTE.

Voting at General Office, December 6th, from 8 a.m. to 12 noon and 2 to 7-30 p.m.

Dividend Paying at Central: Thursday, Friday, and Saturday, December 7th, 8th, and 9th, from 10 a.m. to 1 p.m. and 2 to 6 p.m. each day.

Owing to the War Emergency and our desire to safeguard the vital records of the Society we ask you to use your Share Book for transactions at the Office instead of the Pass Card, and have decided they shall only be retained in the Office from a week before the Quarterly Meeting until a fortnight afterwards. By this means should enemy attack destroy any records your Share Account could be built up from your Share Book.

# BUY EARLY—

*from the*

## GROCERY and GREENGROCERY DEPARTMENTS and DORDON BRANCH

**B**EFORE you purchase elsewhere we invite your inspection. Our goods will be the best, and prices reasonable. Our display will be well worth your visit, and your purchase our pleasure.



### Floral Tributes

of every Design made while you wait.  
Holly Wreaths, Chaplets, Statice, Laurel,  
Bark Crosses, Hearts, Gates Ajar,  
Crowns, and Harps, and the usual 4/-  
and 5/- parcels.

We shall have the Biggest and Best Show of  
**FRUIT, NUTS, FLOWERS,**  
**and VEGETABLES in**  
**TAMWORTH**

at our Greengrocery Department  
Lichfield Street





# Christmas Gifts for All



*We have the finest selection of Seasonable  
Gifts in the District. Perfumes and  
Coffrets by Leading Makers, from  
6d. to 35s.*

**COTY, YARDLEY, 4711, DUBARRY, POTTER AND  
MOORE, ATKINSON, EVENING IN PARIS, &c.**

Perfume Sprays and Compacts in Beautiful Variety. Ladies'  
Brush Sets, Manicures, at Competitive Prices

Gents' Dressing Cases, Military Brush Sets, in the Latest  
Designs. Valet, Gillette, Ever-Ready, and Rolls Razors, &c.

---

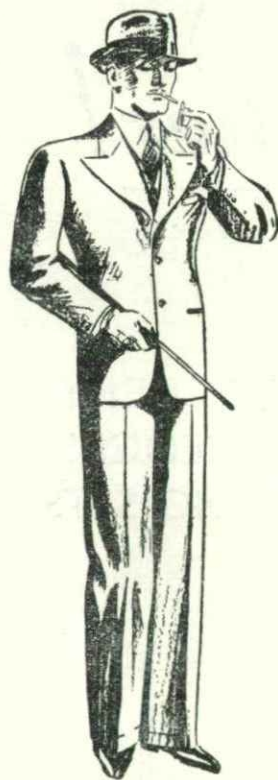
∴ ∴ **Chemistry Department** ∴ ∴

# OUTFITTING DEPARTMENT

For **GIFTS**

USEFUL - AND SERVICEABLE

*An Extensive Range to suit all Pockets.*



SUITS and OVERCOATS for Men and Boys.  
 RAINCOATS, CYCLING CAPES, &c.  
 SHIRTS, PYJAMAS, DRESSING GOWNS,  
 HATS, CAPS, and TIES.  
 SLIPOVERS, PULLOVERS, and CARDIGANS.  
 SOCKS, STOCKINGS, and UNDERWEAR.  
 TIE PRESSES, TROUSERS PRESSES,  
 and PYJAMA CASES.  
 MOTOR RUGS and GLOVES.



**QUALITY AND VARIETY AT COMPETITIVE PRICES**



TOYS

CHRISTMAS, 1939

GIFTS

# How to Make your Money go Further!

Here are a few examples  
of our Stocks :

ELECTRIC IRONS .....	8/3
ELECTRIC FIRES .....	7/9
ELECTRIC READING LAMPS.....	7/6
ALL-ELECTRIC RADIO SETS... £6/19/6	
OAK TABLES .....	13/6
CHINA CABINETS.....£4/14/6	
FRAMELESS MIRRORS .....10/- to	26/6
CHIME CLOCKS .....	35/-
DOLLS .....	3/6
PISTOLS .....	1/6
TRAIN SETS .....	4/6
BOARD AND EASEL .....	1/6
DOLLS' PRAMS .....	22/6
WHEELBARROWS .....	4/11
GAMES .....	6d.
OAK CURBS .....	13/6
HANDBAGS .....	4/11 to 20/-
KIDDIES' HANDBAGS .....	2/6
SEWING CASES .....	1/11
21-PIECE TEASETS .....	6/9
BRASSWARE..... from.	1/3
LADIES' WRIST WATCH .....	10/6
LUMINOUS BROOCHES .....	1/-
IDENTIFICATION BRACELETS....	1/3

VISIT THE

## SPECIAL DISPLAY

OF TOYS, CUTLERY, CROCKERY,  
FANCY WARE, HANDBAGS, CLOCKS,  
ELECTRICAL GOODS, and RADIO SETS

NOW BEING SHOWN ON SPECIAL STANDS

To give you the greatest ease and  
speedy service when shopping

*Here is the Place*

**FURNISHING, HARDWARE, & CROCKERY  
DEPARTMENTS, COLEHILL**

All our Goods are Guaranteed! Compare our Prices



GIFTS

**and Do Not Forget to Bring the Kiddies**

TOYS



# USEFUL and SERVICEABLE PRESENTS

## from the

# DRAPERY DEPARTMENT

Despite the war difficulties, we hope to have a wide and useful range of goods suitable for presents. Our prices will be kept as low as possible under the circumstances. Please inspect our stocks before deciding on your purchases.

### WE ARE AT YOUR SERVICE.

HANDKERCHIEFS, Macclesfield Silk.  
 HANDKERCHIEFS, White Hemstitched  
 Lawn.  
 HANDKERCHIEFS, White Hemstitched  
 Linen.  
 UMBRELLAS.  
 GLOVES, Fur Backed.  
 GLOVES, Nappa.  
 SCARFS.  
 DRESSING GOWNS.  
 WOOLLEN JUMPERS.  
 WOOLLEN CARDIGANS.  
 UNDERWEAR—  
 Celanese Silk Sets.  
 Celanese Silk Pyjamas.  
 Celanese Silk Nightdresses.

#### UNDERWEAR—*continued*

Interlock Vests.  
 Interlock Combinations.  
 Pesco All-wool Vests.  
 Pesco All-wool Combinations.  
 AFTERNOON TEA CLOTHS.  
 SETTEE SETS.  
 TEA COSIES.  
 SIDEBORD COVERS.  
 CUSHION COVERS.  
 CUSHIONS in Tapestry, Folkweave, and  
 Silks.  
 TAPESTRY TABLECLOTHS.  
 CHENILLE TABLECLOTHS.  
 CHENILLE CURTAINS.  
 HORROCKS' PILLOW CASES, Plain.  
 HORROCKS' PILLOW CASES, Hem-  
 stitched.

#### AMERICAN SETS.

BED SETS (1 Sheet, 2 Pillow Cases, 1 Bolster  
 Case).  
 SILK BEDSPREADS.  
 FOLKWEAVE BEDSPREADS.  
 EIDERDOWNS, Full Sizes.  
 BABIES' DRESSES, All Shades—Silk  
 BABIES' DRESSES, All Shades—Wool.  
 JERSEY SUITS, 14in., 16in., 18in.  
 WOOL BREECHETTE SETS, All Shades,  
 14in., 16in., 18in.  
 WOOL FROCKS.  
 FUR-TRIMMED COATS, Maids' 8's to  
 O.S.  
 UNTRIMMED PLAIN CLOTH COATS,  
 Maids' 8's to O.S.

P.S.—We have a few pre-war bargains in FUR-TRIMMED and UNTRIMMED COATS. BRAND NEW GOODS  
 AT OLD PRICES. Strictly limited quantity.

# To the Tamworth Industrial Co-operative Society Ltd.

## AUTHORITY TO WITHDRAW DIVIDEND.

*I, the undersigned, hereby give notice to withdraw my Dividend due for the Quarter ended October 14th, 1939, and I hereby authorise you to pay the same to the bearer of this Voucher.*

*Signed*.....

*Received the sum of*.....

*pounds* ..... *shillings* ..... *pence*

*this*..... *day of December, 1939.*

*Share No.*.....

Members are requested to produce their PASS  
CARDS at the time of Payment.

£       :       :

*Signature of Receiver*.....

### TIMES OF PAYMENT:

Thursday.....10	a.m. to 1 p.m.	2 p.m. to 6 p.m.
Friday.....10	"    1    "	2    "   6    "
Saturday.....10	"    1    "	2    "   6    "

NOTE.—This Form must be filled up by the Owner of the Shares. Where same cannot write, his or her cross must be affixed and witnessed.

To the Tamworth Industrial Co-operative Society Limited.

## NOTICE OF ADDRESS.

Sirs,  
I beg to advise you that my present address is:—

Name.....

Street.....

Town or Village.....

Share No.....



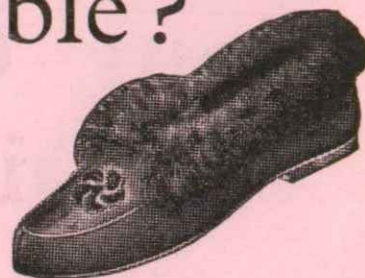
**THE BLACK-OUT MEANS MORE HOURS INDOORS!**

Why not be comfortable?



*We have our usual fine assortment of*

**WHEATSHEAF  
FOOT COMFORTS**



**LADIES'**

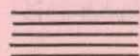
	Per pair.
Arctic Camel Cloth .....	2/2, 2/II, 3/6, 4/3
Cosy Corner Felt .....	2/2
Suedette, with heels .....	3/3
Flowered Poplin, with heels .....	3/3
Leatherette, with heels .....	3/3
Moccasins, with heels .....	4/6
Velvet, with heels .....	3/II, 4/3, 4/II
Leather, fur bound, flat heels .....	5/6
Leather, pom-pom, with heels .....	4/3
Leather, fur instep, with heels .....	4/6
Leather, Coloured Panels .....	5/3
Leather, fur bound .....	5/6
Leather Moccasins, leather sole, wedge heel .....	4/II
Leather, motif front, with heels .....	5/6
Leather, fur bound, flat heel, wide fitting .....	5/II

**CHILDREN'S**

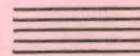
	4 to 6	7 to 10	11 to 1
Camel Cloth, Arctic, ankle strap .....	1/10	2/2	2/4
Felt, ankle strap, cushion soles .....	2/3	2/9	2/II
Felt Bootee, zip fastener, cushion soles .....	2/II	3/3	3/6

**MEN'S**

Arctic .....	2/II, 3/3, 3/6, 4/II
Bootee, zip fastener .....	5/6
Venetian .....	4/6
Leather, black and brown .....	4/3, 4/9, 5/6, 5/II



**BOOT and SHOE DEPARTMENT**

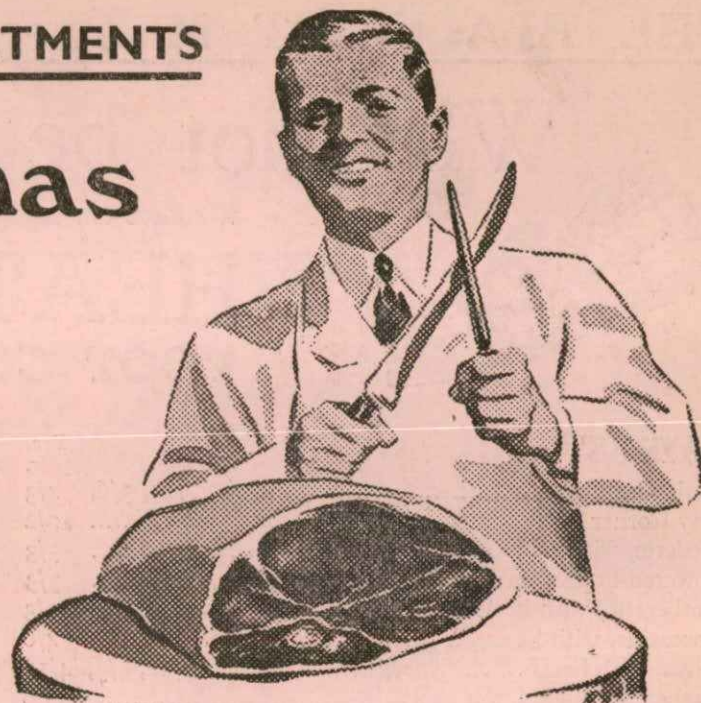




**BUTCHERY AND FISH DEPARTMENTS**

# **Your Christmas Dinner!**

Whether you intend having  
**POULTRY or MEAT**  
for Christmas come to us for  
your requirements



The BEST ENGLISH and  
FOREIGN MUTTON, LAMB,  
BEEF, and PORK will be secured  
by us for you

POULTRY of every kind—  
TURKEYS, GEESE, FOWLS,  
PHEASANTS, &c., also  
PORK PIES and SAUSAGES